



August 2007

Health Science Libraries' Statistics for 2007 Board Retreat

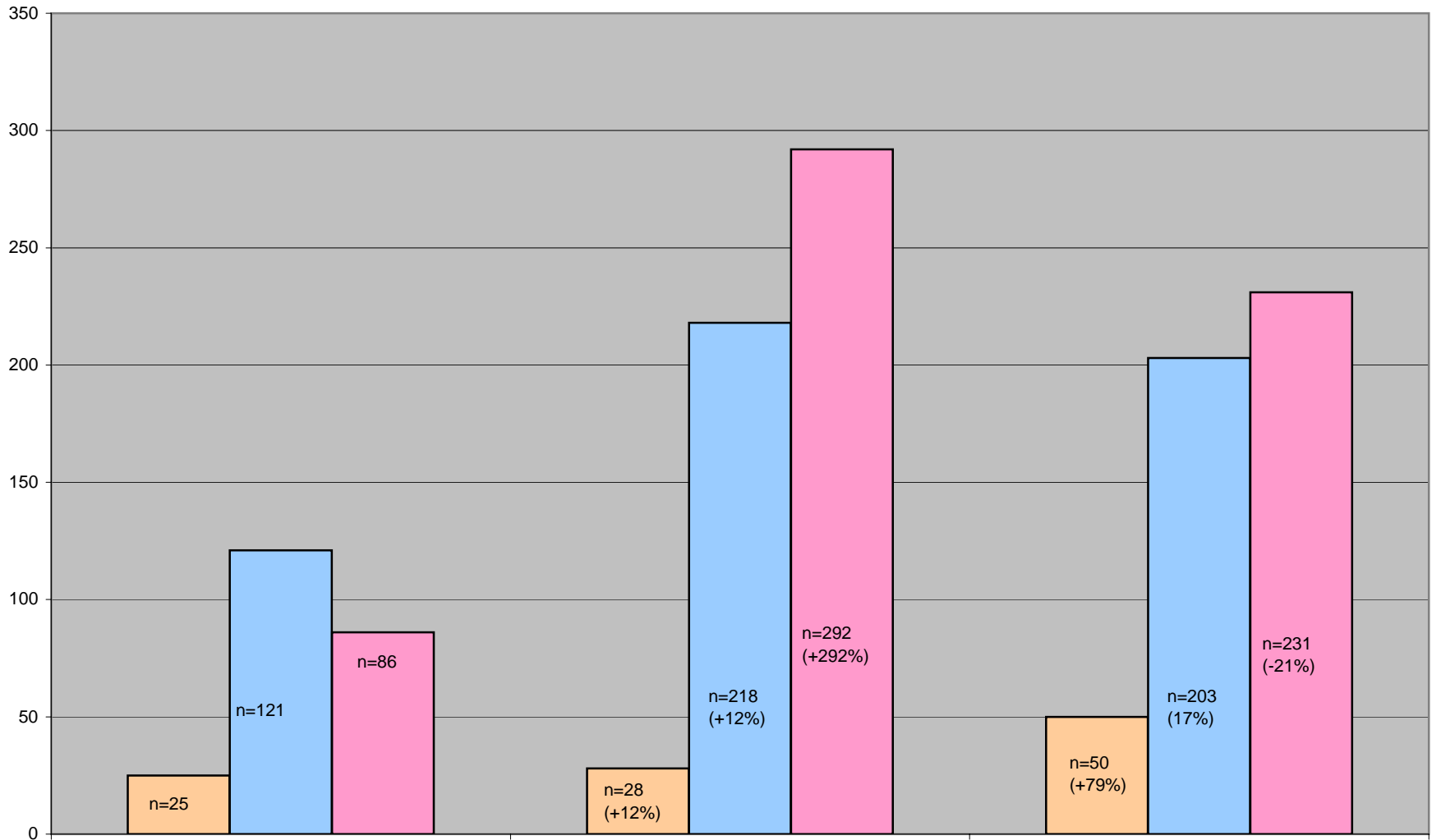
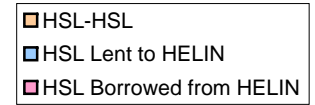
Follow this and additional works at: <http://helindigitalcommons.org/usage>

Recommended Citation

"Health Science Libraries' Statistics for 2007 Board Retreat" (2007). *HELIN Annual Loan Statistics*. Paper 3.
<http://helindigitalcommons.org/usage/3>

This Article is brought to you for free and open access by the HELIN Statistical Reports at HELIN Digital Commons. It has been accepted for inclusion in HELIN Annual Loan Statistics by an authorized administrator of HELIN Digital Commons. For more information, please contact anne@helininc.org.

HSL and HELIN (n.b. NOT Brown)
Book Borrowing and Lending
[Y1=2004-05; Y2=2005-06; Y3=2006-07]



	2004-2005	2005-2006		2006-2007	
	Y1 Sep-Jun	Y2 Sep-Jun	Y1-Y2 change	Y3 Sep-Jun	Y2-Y3 change
HSL-HSL	25	28	12%	50	79%
HSL Lent to HELIN	121	218	80%	203	-7%
HSL Borrowed from HELIN	86	292	240%	231	-21%

This data does not include any transaction to or from BROWN

HELIN/InRhode-HSL ACTIVITY	Avg/mo pre-HELIN	S-04	O-04	N-04	D-04	J-05	F-05	M-05	A-05	M-05	J-05	J-05	A-05	S-05	O-05	N-05	D-05	J-06	F-06	M-06	A-06	M-06	J-06	J-06	A-06	S-06	O-06	N-06
HSL-HSL	0	0	0	4	4	1	7	1	4	2	2	1	1	2	2	0	1	5	2	2	2	1	11	3	5	2	2	9
HSL Lent to HELIN	0	1	5	13	13	9	14	21	25	10	10	8	2	16	42	22	20	14	33	24	27	8	12	4	7	16	34	25
HSL Borrowed from HELIN	4	2	8	1	20	8	12	8	9	4	14	5	6	15	16	12	30	37	40	24	20	36	62	24	17	19	20	17

D-06	J-07	F-07	M-07	A-07	M-07	J-07
4	10	7	5	7	1	3
9	15	20	32	31	8	13
6	37	26	33	34	24	15